

Romania

EPR Fact Sheet

Decision making

According to the current legislation, the National System for the Management of Emergencies has three types of structures:

- the decisional structure – the committees for emergencies,
- the executive structure,
- the operational structure – the operative centres for emergencies.

All the decisional, executive and operational structures are established on three levels: national, county and local.

As a decision structure, at national level is organized the National Committee for Special Emergency Situations. The National Committee for Special Emergency Situations is set-up under the co-ordination of the Prime Minister and managed by the Minister of Internal Affairs. All the ministerial, county and local Committees are subordinated to the National Committee for Special Emergency Situations.

Advice

Advice to the decision-making bodies and the responding organization is provided by the national competent authority (CNCAN) and some specific technic support organization. The assessment of the plant conditions and the possible off-site consequences is performed by the National Commission for Nuclear Activities Control CNCAN (regulatory body).

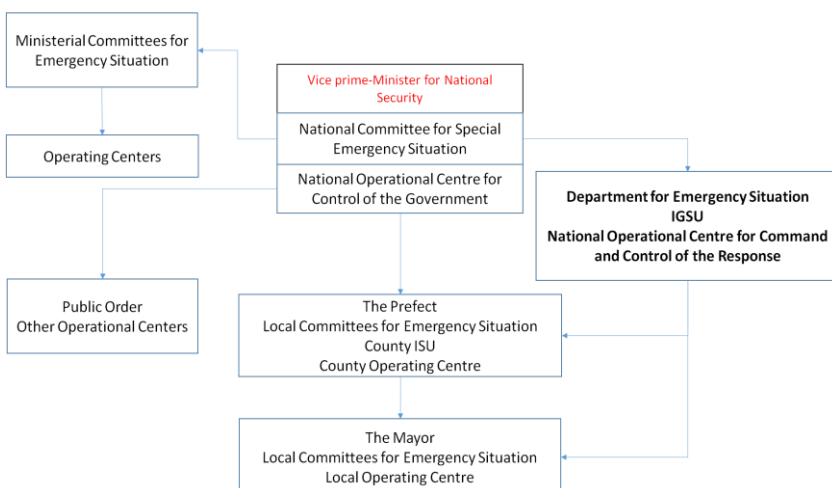
Licensee

The licensee has to notify CNCAN, without delay, of any event fulfilling defined criteria. The licensee has to transmit all relevant and available information to CNCAN, in order for the regulatory body to assess the situation and to recommend off-site protective actions for the public.

Alarming

The licensee has to report the emergency to CNCAN, Local Authorities and IGSU immediately if a facility, site or general emergency was classified. The sirens are activated by the local authorities and instructions are broadcasted throughout national and private Radio/TV stations.

Organizational structure



Country info

Capital	Bucharest
Official language	Romanian
Population	20 M
Area	238 391 km ²
Currency	Leu (RON)
Time zone	UTC+2
Calling code	+40
Internet TLD	.ro
NPPs /ele. share	2/18%

NWP*

National Commission for Nuclear Activities Control

NCA*

National Commission for Nuclear Activities Control (CNCAN)

Emergency website

www.cncan.ro

www.igsu.ro

Online measurements

<http://www.anpm.ro/debit-doza-gama>

Bilateral agreements

Bulgaria, Ukraine, Hungary, Turkey, Serbia, Greece, Russia

RANET capabilities

- Source Search and Recovery
- Radiation Survey
- Environmental Sampling and Analysis
- Radiological Assessment and Advice
- Dose Assessment
- Decontamination

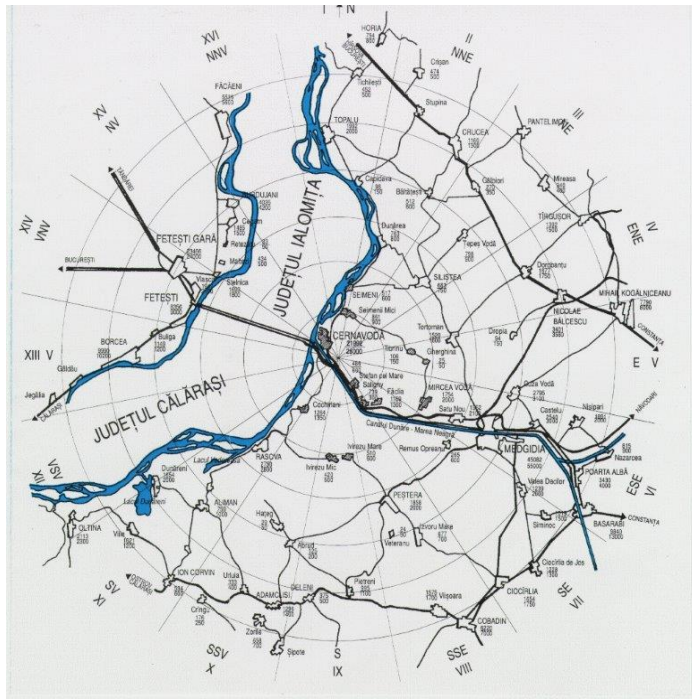
*National Warning Point and Competent Authority under the Emergency Conventions

Nuclear facilities* and population

NPP	Type	MW _e	GPS coordinates	5 km pop.	15 km pop.	100 km pop.	Comments
Cernavoda 1	PHWR	700	44.320431° N 28.059873° E	15 000	25 000	600 000	
Cernavoda 2	PHWR	700	44.321448° N 28.058512° E	15 000	25 000	600 000	

*The IAEA emergency preparedness category 1 and other relevant facilities

Planning zones



Emergency classification

- 0 – Alert
- 1 – Facility Emergency
- 2 – Site Emergency
- 3 – General emergency

Comments

- Romanian emergency classification is according to IAEA's classification from GSR Part7
- Precautionary action zone: 5 km
- Urgent protective action zone: 15 km

Protection strategy

Reference level of 100 mSv (eff. dose all pathways, 1 year) is a target for protection strategy during nuclear or radiological emergencies. The protection strategy is according to GSR part 7 (Generic Criteria).

Criteria

Protective Action	OILs /EALs	Comments
Evacuation in PAZ (5 km)	General Emergency	In addition, access and traffic restrictions (road, naval, rail, aviation)
Sheltering in UPZ (15 km)	General Emergency	In addition, access and traffic restrictions (road, naval, rail, aviation)
ITB	With sheltering and/or evacuation	Iodine tablets pre-distributed within 5 km of plant

Comments

Other protective actions outside the planning zones in emergency planning distance and food restriction and commodities distance (100km):

- Restrict consumption, distribution and sale of non-essential food, milk and drinking water and restrict the use and distribution of other commodities